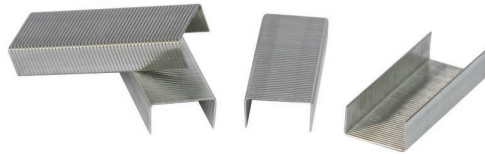


## TECHNICAL DATA SHEET

### Stapling & Punches - Staples



#### GENERAL INFORMATION

---

**KF number** KF14382

**Description** Staples No.25, Galvanised - Box 1600

**Country of origin** China

**Customs code** 8305200000

**Eclass** 24220605

#### TECHNICAL INFORMATION

---

**staple height:** 4mm

**staple width:** 7,18mm

**Wire thickness:** 0.415mm

## PACKAGING INFORMATION

---

<b>Barcode</b>	570583114379	<b>Length</b>	6,3 cm
<b>BOSS notation</b>	Pack 1600	<b>Height</b>	1,1 cm
<b>Packaging contents</b>	1600	<b>Width</b>	2,7 cm
<b>Weight in KG</b>	0,028KG		

<b>Barcode</b>	570600214379	<b>Length</b>	11 cm
<b>BOSS notation</b>	10 x Pack 1600	<b>Height</b>	3 cm
<b>Packaging contents</b>	16000	<b>Width</b>	6,6 cm
<b>Weight in KG</b>	0,291KG		

<b>Barcode</b>	570600314379	<b>Length</b>	34 cm
<b>BOSS notation</b>	50 x 10 x Pack 1600	<b>Height</b>	16,5 cm
<b>Packaging contents</b>	800000	<b>Width</b>	23 cm
<b>Weight in KG</b>	15,2KG		

Please note that weights and dimensions are indicative and can have slight variations due to each own manufacturing

## COMMENTS & NOTES

---

Q-Connect N°25 Staples. Precision made staples engineered to the highest standards of quality to give excellent performance. Designed to fit all staplers using N°25 staples.